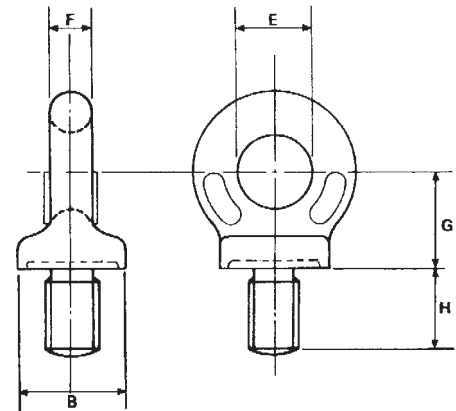


COLLAR EYEBOLTS

BS 4278: TABLE 1 1984

HW 410 Coarse Threads

PART No.	SWL Tonnes	Thread Size	B mm	E mm	F mm	G mm	H mm	Weight Each Kgs
HW410/1	0.40	M12	22	15	9	20	18	0.07
HW410/2	0.80	M16	29	20	12	26	23	0.16
HW410/4	1.60	M20	40	27	16	36	32	0.44
HW410/6	2.50	M24	52	35	21	46	40	0.85
HW410/8	4.00	M30	65	44	26	58	51	1.66
HW410/10	6.30	M36	81	54	32	72	63	3.17
HW410/12A	10.00	M48	101	68	40	90	79	9.00
HW410/13	12.50	M52	115	76	46	102	89	9.00
HW410/14	16.00	M56	128	86	51	114	100	13.00
HW410/15	20.00	M64	144	96	58	128	112	17.50
HW410/16A	25.00	M72	162	108	65	144	126	31.00



**MATERIAL: AS SPECIFIED BY
BS 4278 HARDENED & TEMPERED
S.W.L. SHOWN AT 0° (VERTICAL)
ANGLE OF LIFT**

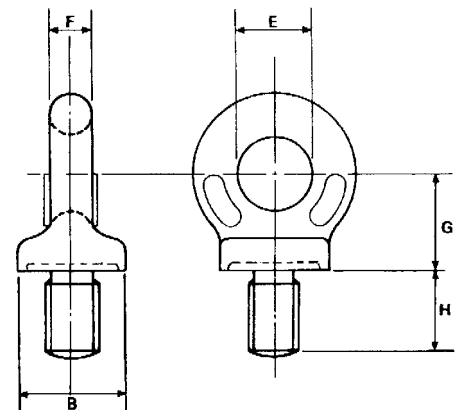
Other pitches available on application

STAINLESS STEEL GRADE 316 EYEBOLTS

BASED ON BS 4278 TABLE 1: 1984

HW 470 Coarse Pitch

PART No.	SWL Tonnes	Thread Size	B mm	E mm	F mm	G mm	H mm	Weight Each Kgs
HW470/0SS	0.15	M8	22	15	9	20	18	0.06
HW470/0ASS	0.25	M10	22	15	9	20	18	0.07
HW470/1SS	0.40	M12	22	15	9	20	18	0.07
HW470/2SS	0.80	M16	29	20	12	26	23	0.16
HW470/4SS	1.60	M20	52	35	21	46	40	0.75
HW470/5SS	1.60	M22	52	35	21	46	40	0.80
HW470/6SS	2.50	M24	52	35	21	46	40	0.84
HW470/8SS	4.00	M30	65	44	26	58	51	1.66
HW470/10SS	6.30	M36	81	54	32	72	63	3.17



Eyebolts under 12mm are not recommended for lifting.
Other diameters, thread forms and pitches available on application.

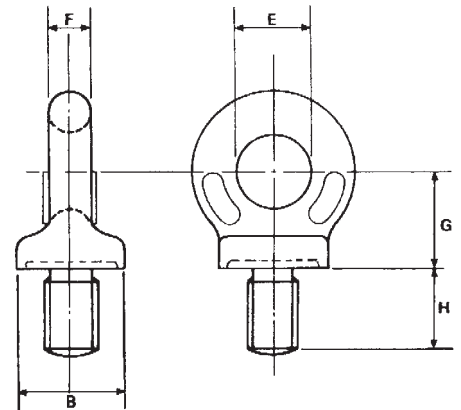
FOR LOADING AT ANGLES AND TRUNNION LIFTING SEE PAGE 6

COLLAR EYEBOLTS

BS 4278: TABLE 1 1968

HW 200 Coarse Threads

PART No.	SWL Tonnes	Thread Size	B mm	E mm	F mm	G mm	H mm	Weight Each Kgs
HW200/0*!	0.10	M6	22	15	9	20	18	0.06
HW200A/0*!	0.15	M8	22	15	9	20	18	0.06
HW200B/0A*!	0.25	M10	22	15	9	20	18	0.07
HW200/1A*	0.50	M14	29	20	12	26	23	0.15
HW200/3	1.00	M18	36	24	14	32	28	0.28
HW200/5	1.60	M22	45	30	18	40	35	0.56
HW200/7	2.50	M27	58	39	23	52	46	1.14
HW200/9	4.00	M33	72	48	29	64	56	2.24
HW200C/11§	6.30	M39	90	60	36	80	70	3.92
HW200H/11A*	8.00	M42	101	68	40	90	79	6.00
HW200/12	8.00	M45	101	68	40	90	79	6.00
HW200/16	20.00	M70	172	114	67	152	133	31.00
HW200/17	25.00	M76	172	114	67	152	133	31.00
HW200J/17A†	30.00	M80	172	114	67	152	133	31.00



MATERIAL: AS SPECIFIED BY BS 4278 HARDENED & TEMPERED S.W.L. SHOWN AT 0° (VERTICAL) ANGLE OF LIFT.

SAFETY NOTE: EYEBOLTS UNDER M12 ARE NOT RECOMMENDED FOR LIFTING.

Items marked * are non-standard thread sizes and are produced from the nearest larger size of BS 4278 Table 1 Forgings.

Items marked § are produced from BS 529 Part 1 1½" dia. Forgings.

Items marked † are produced from 76mm BS 4278 Table 1 Forgings.

Items marked ! are not recommended for lifting.

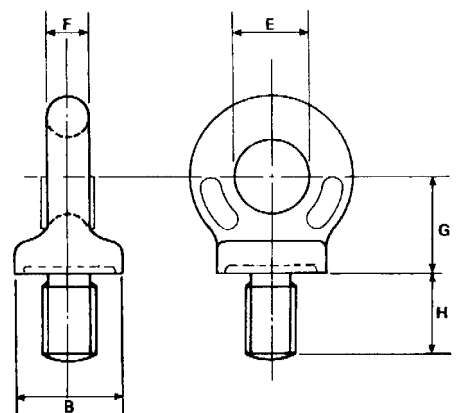
Other pitches are available on application.

COLLAR EYEBOLTS Produced from

BS 4278: TABLE 1 1984 FORGINGS

HW 99 BSP THREAD TO BS 2779: 1986

PART No.	SWL Tonnes	Thread Size	B mm	E mm	F mm	G mm	H mm	Weight Each Kgs
HW99/1	0.10	¼	29	20	12	26	23	0.14
HW99/2	0.25	⅜	36	24	14	32	28	0.38
HW99/3	0.50	½	45	30	18	40	35	0.60
HW99/4	1.40	¾	65	44	26	58	51	1.78
HW99/5	2.75	1	81	54	32	72	63	3.17



MATERIAL: AS SPECIFIED BY BS 4278 HARDENED & TEMPERED S.W.L. SHOWN AT 0° (VERTICAL) ANGLE OF LIFT

Larger and Intermediate sizes available on application

FOR LOADING AT ANGLES AND TRUNNION LIFTING SEE PAGE 6

Harris-Walton Lifting Gear Ltd.

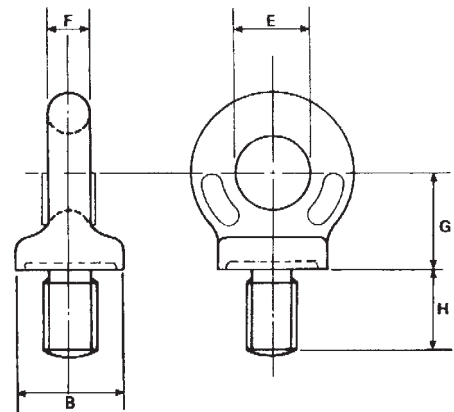
Two Woods Lane, Brierley Hill, West Midlands DY5 1TR. Telephone: 01384 74071 (10 Lines) Fax: 01384 74070

COLLAR EYEBOLTS (Imperial Threads)

BS 4278: 1984 Appendix 'A' TABLE 4

HW 440

PART No.	SWL Tonnes	Thread Size	B mm	E mm	F mm	G mm	H mm	Weight Each Kgs
HW440/1	0.25	3/8	22	15	9	20	18	0.08
HW440/2	0.50	1/2	29	20	12	26	23	0.14
HW440/3	0.90	5/8	36	24	14	32	28	0.38
HW440/4	1.40	3/4	45	30	18	40	35	0.60
HW440/5	2.00	7/8	52	35	21	46	40	0.78
HW440/6	2.75	1	58	39	23	52	46	1.67
HW440/7	3.50	1 1/8	65	44	26	58	51	1.78
HW440/8	4.50	1 1/4	72	48	29	64	56	2.24
HW440/9	6.50	1 1/2	81	54	32	72	63	3.17
HW440/10	9.00	1 3/4	101	68	40	90	79	6.00
HW440/11	12.00	2	115	76	46	102	89	9.00
HW440/12	15.00	2 1/4	128	86	51	114	100	15.00
HW440/13	20.00	2 1/2	144	96	58	128	112	18.20
HW440/14	30.00	3	172	114	67	153	133	30.40



**MATERIAL: AS SPECIFIED BY
BS 4278 HARDENED & TEMPERED
S.W.L. SHOWN AT 0° (VERTICAL)
ANGLE OF LIFT**

Supplied with Whitworth, UNC, BSF
and UNF Threads.

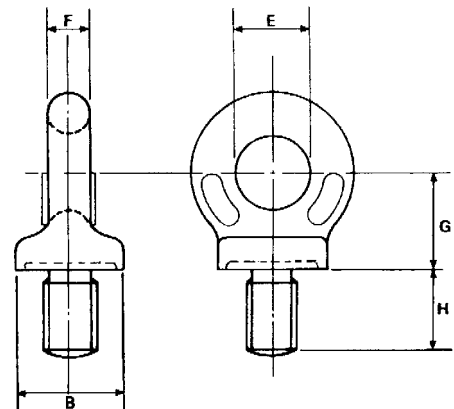
ALSO MANUFACTURED OUTSIDE BS 4278:

1984 Appendix 'A' TABLE 4

COLLAR EYEBOLTS

SWL Tonnes	Thread Size	B mm	E mm	F mm	G mm	H mm	Weight Each Kgs
0.10	1/4	22	15	9	20	18	0.06
0.15	5/16	22	15	9	20	18	0.06
0.375	7/16	29	20	12	26	23	0.07
0.70	9/16	36	24	14	32	28	0.15
1.00	1 1/16	45	30	18	40	35	0.28

Manufactured in Whitworth, UNC, BSF and UNF Threads.



**MATERIAL: AS SPECIFIED BY
BS 4278 HARDENED & TEMPERED
S.W.L. SHOWN AT 0° (VERTICAL)
ANGLE OF LIFT**

SAFETY NOTE:

**EYEBOLTS UNDER 3/8" DIA. ARE NOT RECOMMENDED FOR LIFTING.
FOR LOADING AT ANGLES AND TRUNNION LIFTING SEE PAGE 6**

EYEBOLTS WITH COLLARS

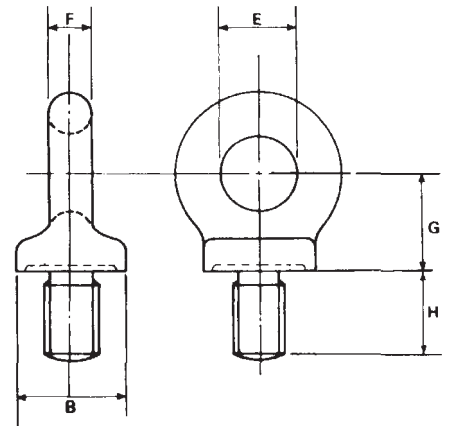
BS 529: PART 1 1944

HW 90

PART No.	SWL		Thread Dia.	B ins	E ins	F ins	G ins	H ins	Weight Each Kgs
	Tons	Cwts							
HW90/4	1	8	$\frac{3}{4}$	$1\frac{11}{16}$	$1\frac{1}{8}$	$2\frac{1}{32}$	$1\frac{1}{2}$	$1\frac{5}{16}$	0.5
HW90/5	2	0	$\frac{7}{8}$	$1\frac{31}{32}$	$1\frac{5}{16}$	$2\frac{25}{32}$	$1\frac{3}{4}$	$1\frac{17}{32}$	0.6
HW90/6	2	15	1	$2\frac{1}{4}$	$1\frac{1}{2}$	$\frac{7}{8}$	2	$1\frac{3}{4}$	1.1

**MATERIAL: AS SPECIFIED BY BS 529
HARDENED & TEMPERED
S.W.L. SHOWN AT 0° (VERTICAL) ANGLE OF LIFT**

Supplied with Whitworth Threads.
UNC, BSF, UNF and special threads also available.

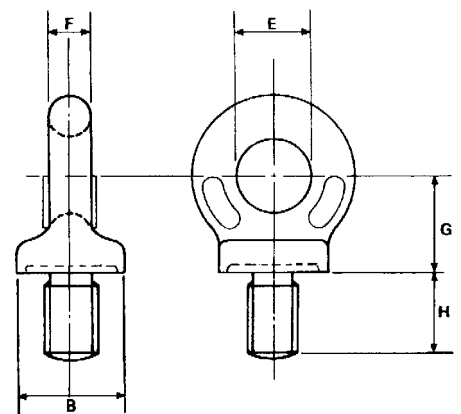


COLLAR EYEBOLTS 8UN Thread

Based on BS 4278 Table 4 Appendix 'A': 1984

PART No.	SWL		Thread Size	B mm	E mm	F mm	G mm	H mm	Weight Each Kgs
	Tonnes								
HW90A/6UN	3.50		$1\frac{1}{8}$	65	44	26	58	51	1.78
HW90D/7UN	4.50		$1\frac{1}{4}$	72	48	29	64	56	2.24
HW90L/7AUN	5.50		$1\frac{3}{8}$	81	54	32	72	63	3.17
HW90J/8UN	5.00*		$1\frac{1}{2}$	81	54	32	72	63	3.17
HW90N/9UN	9.00		$1\frac{3}{4}$	101	68	40	90	79	6.00
HW90M/11UN	12.00		2	115	76	46	102	89	9.00

* SWL can be uprated to 6.5 tonne.
Larger and Intermediate sizes available on application.



**MATERIAL: AS SPECIFIED BY
BS 4278 HARDENED & TEMPERED
S.W.L. SHOWN AT 0° (VERTICAL)
ANGLE OF LIFT**

FOR LOADING AT ANGLES AND TRUNNION LIFTING SEE PAGE 6

Harris-Walton Lifting Gear Ltd.

Two Woods Lane, Brierley Hill, West Midlands DY5 1TR. Telephone: 01384 74071 (10 Lines) Fax: 01384 74070

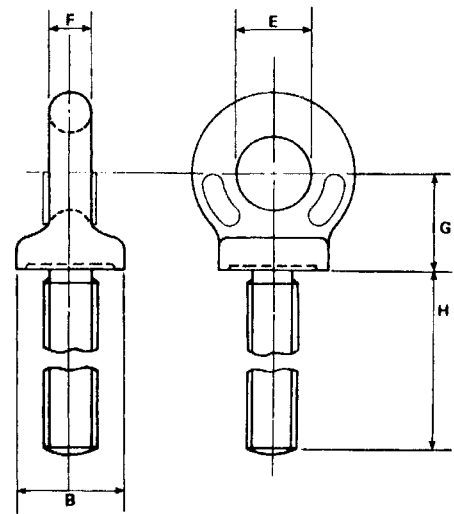
EYEBOLTS WITH COLLARS (Imperial Threads)

LONG SHANKS TO BS 529: PART 1 1944

HW 91

PART No.	SWL	Thread Dia.	B ins	E ins	F ins	G ins	H ins	Weight Each Kgs
HW91/1*	250Kgs	$\frac{3}{8}$	$\frac{7}{8}$	$\frac{9}{16}$	$\frac{3}{8}$	$\frac{3}{4}$	7	0.2
HW91/2	500Kgs	$\frac{1}{2}$	$1\frac{1}{8}$	$\frac{3}{4}$	$\frac{7}{16}$	1	7	0.2
HW91/3	900Kgs	$\frac{5}{8}$	$1\frac{13}{32}$	$\frac{15}{16}$	$\frac{9}{16}$	$1\frac{1}{4}$	7	0.5
HW91/4	1.4t	$\frac{3}{4}$	$1\frac{11}{16}$	$1\frac{1}{8}$	$\frac{21}{32}$	$1\frac{1}{2}$	7	0.8
HW91/5	2t	$\frac{7}{8}$	$1\frac{31}{32}$	$1\frac{5}{16}$	$\frac{25}{32}$	$1\frac{3}{4}$	7	1.0
HW91/6	2.75t	1	$2\frac{1}{4}$	$1\frac{1}{2}$	$\frac{7}{8}$	2	7	1.5
HW91/7	3.5t	$1\frac{1}{8}$	$2\frac{13}{16}$	$1\frac{7}{8}$	$1\frac{3}{32}$	$2\frac{1}{2}$	7	2.0
HW91/8	4.5t	$1\frac{1}{4}$	$2\frac{13}{16}$	$1\frac{7}{8}$	$1\frac{3}{32}$	$2\frac{1}{2}$	7	2.9

* Produced from 12mm Long Shank BS 4278 Table 1: 1984 Forgings.
Supplied in Whitworth or UNC Threads.
Also available with BSF and UNF Threads



**MATERIAL: AS SPECIFIED IN
BS 529 HARDENED & TEMPERED
S.W.L. SHOWN AT 0° (VERTICAL)
ANGLE OF LIFT**

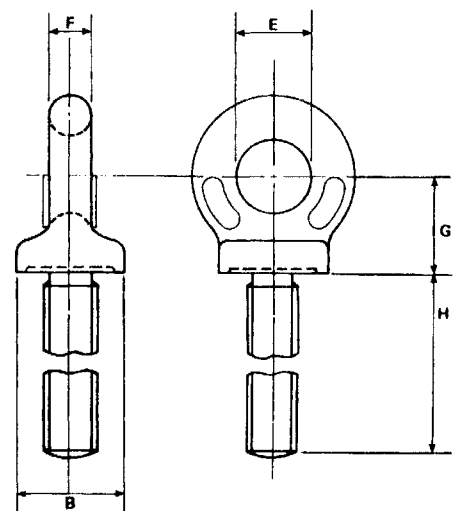
EYEBOLTS WITH COLLARS

LONG SHANKS PRODUCED FROM BS 529:

PART 1 1944 Forgings HW 91M

PART No.	SWL Tonnes	Thread Size	B mm	E mm	F mm	G mm	H mm	Weight Each Kgs
HW91M/1*	0.25	M10	22	15	9	20	178	0.2
HW91M/2	0.40	M12	28	19	11	25	178	0.2
HW91M/3A	0.50	M14	36	24	14	32	178	0.5
HW91M/3	0.80	M16	36	24	14	32	178	0.5
HW91M/4A	1.00	M18	43	29	17	38	178	0.8
HW91M/4	1.60	M20	43	29	17	38	178	0.8
HW91M/5	1.60	M22	50	33	20	44	178	1.0
HW91M/6	2.50	M24	57	38	22	51	178	1.5
HW91M/6A	2.50	M27	71	48	28	63	178	2.0
HW91M/7	4.00	M30	71	48	28	63	178	2.9

* Produced from 12mm Long Shank BS 4278 Table 1: 1984 Forgings



**MATERIAL: AS SPECIFIED IN
BS 529 HARDENED & TEMPERED
S.W.L. SHOWN AT 0° (VERTICAL)
ANGLE OF LIFT**

SIZES UNDER 12mm except $\frac{3}{8}$ " ARE NOT RECOMMENDED FOR LIFTING.

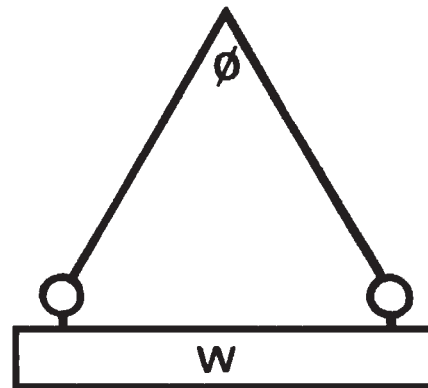
FOR LOADING AT ANGLES AND TRUNNION LIFTING SEE PAGE 6

HW 90, 91, 91M, 99, 200, 410, 440, 470



MAXIMUM RECOMMENDED WORKING LOADS FOR BRITISH STANDARD EYEBOLTS (IMPERIAL AND METRIC THREADS) WHEN USED IN PAIRS FOR INCLINED LOADING CONDITIONS.

SAFE WORKING LOAD FOR A SINGLE EYEBOLT IN VERTICAL LIFT	MAXIMUM LOAD 'W' TO BE LIFTED BY A PAIR OF EYEBOLTS WHEN THE ANGLE Ø BETWEEN THE LEGS IS		
	0°<Ø>30°	30°<Ø>60°	60°<Ø>90°
TONNES	TONNES	TONNES	TONNES
0.25	0.32	0.20	0.13
0.40	0.50	0.32	0.20
0.50	0.63	0.40	0.25
0.80	1.00	0.64	0.40
0.90	1.13	0.72	0.45
1.00	1.30	0.80	0.50
1.25	1.60	1.00	0.63
1.40	1.76	1.12	0.70
1.60	2.00	1.25	0.80
2.00	2.50	1.60	1.00
2.50	3.20	2.00	1.25
2.75	3.47	2.20	1.38
3.20	4.00	2.50	1.60
3.50	4.41	2.80	1.75
4.00	5.00	3.20	2.00
4.50	5.67	3.60	2.25
5.00	6.30	4.00	2.50
6.30	8.00	5.00	3.20
6.50	8.19	5.20	3.25
8.00	10.00	6.30	4.00
9.00	11.34	7.20	4.50
10.00	12.50	8.00	5.00
12.00	15.12	9.60	6.00
12.50	16.00	10.00	6.30
15.00	18.90	12.00	7.50
16.00	20.00	12.50	8.00
20.00	25.20	16.00	10.00
25.00	32.00	20.00	12.50
30.00	37.80	24.00	15.00



FOR TRUNNION LIFTING

The load taken by a single eyebolt should not exceed 25% of its marked SWL.

DYNAMO EYEBOLTS METRIC THREADS

GENERALLY TO BS 4278 TABLE 3 1968

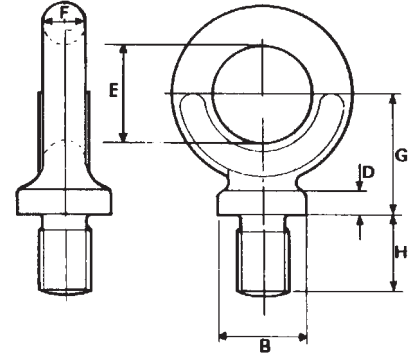
HW 203 Coarse Thread

PART No.	SWL Tonnes	Thread Size	B mm	D mm	E mm	F mm	G mm	H mm	Weight Each Kgs
HW203A/0*	0.10	M6	17	5	22	9	27	18	0.07
HW203B/0A*	0.15	M8	17	5	22	9	27	18	0.08
HW203C/0B*	0.25	M10	17	5	22	9	27	18	0.08
HW203/1	0.32	M12	17	5	22	9	27	18	0.08
HW203G/3 ¹	1.00	M18	32	9	40	15	47	32	0.40
HW203/5	1.60	M22	35	10	44	17	53	35	0.60
HW203/7 ²	2.50	M27	51	14	64	24	76	51	1.78
HW203/8	3.20	M30	51	14	64	24	76	51	1.78

* Outside BS Range produced from 12mm Forgings.

¹ Produced from 20mm Forgings.

² Produced from 30mm Forgings.



**MATERIAL: AS SPECIFIED BY
BS 4278 HARDENED & TEMPERED
S.W.L. SHOWN AT 0° (VERTICAL)
ANGLE OF LIFT.**

**NOT TO BE USED FOR
INCLINED LIFT**

SIZES UNDER 12mm ARE NOT RECOMMENDED FOR LIFTING.



BS EN ISO 9001:2000
Registration No. Q 05597

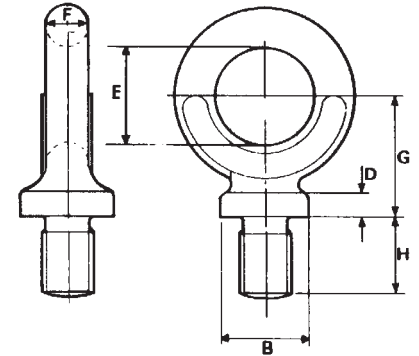
DYNAMO EYEBOLTS IMPERIAL THREADS

BS 4278 APPENDIX A TABLE 6 1984

HW 460

PART No.	SWL Tonnes	Thread Size	B mm	D mm	E mm	F mm	G mm	H mm	Weight Each Kgs
HW460/1	0.25	$\frac{3}{8}$	17	5	22	9	27	18	0.08
HW460/4	0.50	$\frac{1}{2}$	23	6	29	11	34	23	0.14
HW460/6	1.25	$\frac{3}{4}$	32	9	40	15	47	32	0.40
HW460/8	2.00	1	40	12	51	19	60	40	0.78
HW460/10	3.20	$1\frac{1}{4}$	51	14	64	24	75	51	1.78

Supplied with Whitworth Threads.
UNC Threads and other thread forms available on application.



**MATERIAL: AS SPECIFIED BY
BS 4278 HARDENED & TEMPERED
S.W.L. SHOWN AT 0° (VERTICAL)
ANGLE OF LIFT.**

**NOT TO BE USED FOR
INCLINED LIFT**

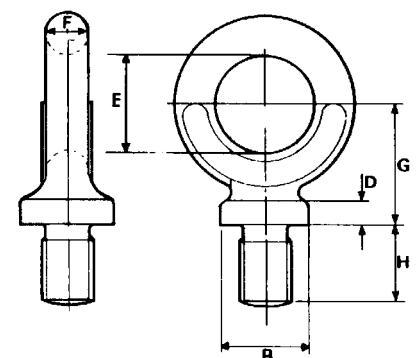
DYNAMO EYEBOLTS METRIC THREADS

BS 4278 TABLE 3 1984

HW 430 Coarse Thread

PART No.	SWL Tonnes	Thread Size	B mm	D mm	E mm	F mm	G mm	H mm	Weight Each Kgs
HW430/2	0.63	M16	23	6	29	11	34	23	0.14
HW430/4	1.25	M20	32	9	40	15	47	32	0.40
HW430/6	2.00	M24	40	12	51	19	60	40	0.78

Alternative pitches available on request.



**MATERIAL: AS SPECIFIED IN
BS 4278 HARDENED & TEMPERED
S.W.L. SHOWN AT 0° (VERTICAL)
ANGLE OF LIFT.**

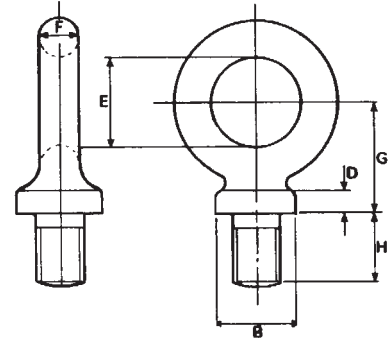
**NOT TO BE USED FOR
INCLINED LIFT**

DYNAMO EYEBOLTS SHORT SHANK (TESTED)

STANDARD COMMERCIAL PATTERN

HW 92T

PART No.	SWL	Thread Dia.	B mm	D mm	E mm	F mm	G mm	H mm	Weight Each Kgs
		ins							
HW92T/1	100Kgs	1/4	19	6	22	9	27	19	0.08
HW92T/2	150Kgs	5/16	19	6	22	9	27	19	0.08
HW92T/3	250Kgs	3/8	19	6	22	9	27	19	0.08
HW92T/4	500Kgs	1/2	25	8	28	9	35	25	0.14
HW92T/5	800Kgs	5/8	28	9	32	13	41	28	0.24
HW92T/6	1.2t	3/4	32	9	40	15	47	32	0.40
HW92T/7	1.6t	7/8	35	10	44	17	53	35	0.62
HW92T/8	2.2t	1	40	12	51	19	60	40	0.80
HW92T/9	2.8t	1 1/8	51	14	64	24	76	51	1.76
HW92T/10	3.5t	1 1/4	51	14	64	24	76	51	1.70
HW92T/11	4.5t	1 3/8	57	17	76	28	89	57	2.60
HW92T/12	5t	1 1/2	57	17	76	28	89	57	2.65

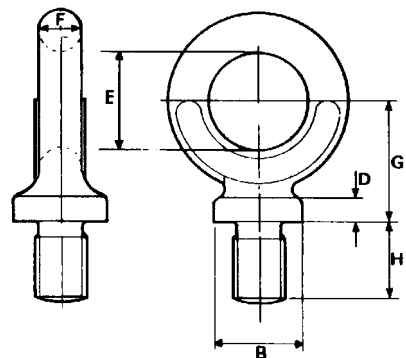


MATERIAL:
H.T. STEEL NORMALISED
S.W.L. SHOWN AT 0° (VERTICAL)
ANGLE OF LIFT.
NOT TO BE USED FOR INCLINED
LIFT.

Supplied with Whitworth Threads.
 UNC, BSF and UNF Threads also available.

HW 92MT and 203 METRIC Coarse Thread

PART No.	SWL	Thread Dia.	B mm	D mm	E mm	F mm	G mm	H mm	Weight Each Kgs
HW92MT/4	320Kgs	M12	25	8	28	9	35	25	0.14
HW203F/1A	500Kgs	M14	28.5	9.5	32	13	41	28.5	0.24
HW92MT/5	630Kgs	M16	28	9	32	13	41	28	0.24
HW203E/10	5t	M36	57	17	76	28.5	89	57	2.65



MATERIAL:
H.T. STEEL NORMALISED
S.W.L. SHOWN AT 0° (VERTICAL)
ANGLE OF LIFT.
NOT TO BE USED FOR INCLINED
LIFT.

Other pitches available on application

AT OUR DISCRETION THESE MAY BE PRODUCED FROM BS 4278 TABLE 3 FORGINGS.

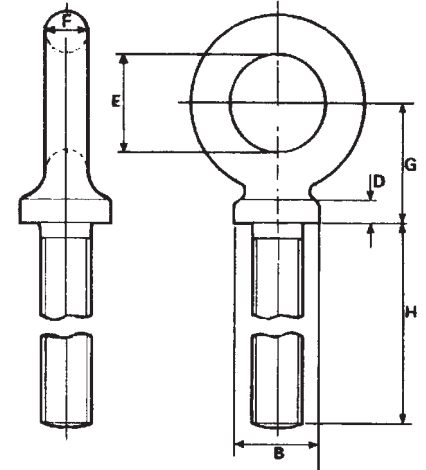
DYNAMO EYEBOLTS LONG SHANK (TESTED)

STANDARD COMMERCIAL PATTERN

HW 93T

PART No.	SWL	Thread Dia.	B ins	D ins	E ins	F ins	G ins	H ins	Weight Each Kgs
HW93T/3	250Kgs	$\frac{3}{8}$	$\frac{3}{4}$	$\frac{1}{4}$	$\frac{7}{8}$	$\frac{3}{8}$	$1\frac{1}{16}$	4	0.1
HW93T/4	500Kgs	$\frac{1}{2}$	1	$\frac{5}{16}$	$1\frac{1}{8}$	$\frac{3}{8}$	$1\frac{3}{8}$	4	0.3
HW93T/5	800Kgs	$\frac{5}{8}$	$1\frac{1}{8}$	$\frac{3}{8}$	$1\frac{1}{4}$	$\frac{1}{2}$	$1\frac{5}{8}$	$4\frac{1}{2}$	0.3
HW93T/6	1.2t	$\frac{3}{4}$	$1\frac{3}{8}$	$\frac{7}{16}$	$1\frac{5}{8}$	$\frac{5}{8}$	$2\frac{1}{8}$	5	0.7
HW93T/8	2.8t	1	$1\frac{5}{8}$	$\frac{1}{2}$	2	$\frac{3}{4}$	$2\frac{1}{2}$	5	1.1

Available in BSW and UNC Threads.
Other sizes and thread forms available on application.



MATERIAL:
H.T. STEEL NORMALISED
S.W.L. SHOWN AT 0° (VERTICAL)
ANGLE OF LIFT.
NOT TO BE USED FOR INCLINED
LIFT.

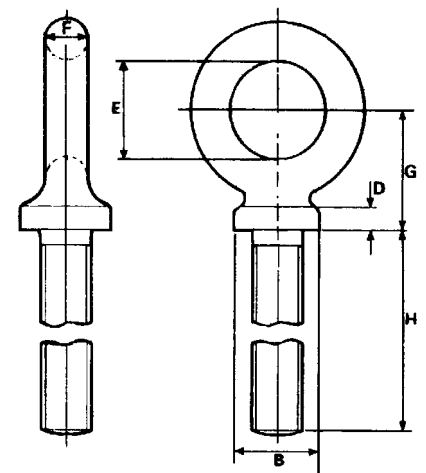
DYNAMO EYEBOLTS LONG SHANK (TESTED)

STANDARD COMMERCIAL PATTERN

HW 93MT

PART No.	SWL	Thread Dia.	B mm	D mm	E mm	F mm	G mm	H mm	Weight Each Kgs
HW93MT/3	250Kgs	M10	19	6	22	9.5	27	101	0.1
HW93MT/4	320Kgs	M12	25	8	28.5	9.5	35	101	0.3
HW93MT/5	630Kgs	M16	28.5	9.5	32	13	41	114	0.3
HW93MT/6	1.25t	M20	35	11	41	16	54	127	0.7
HW93MT/8	2t	M24	41	13	51	19	63.5	127	1.1

Other sizes available on application.

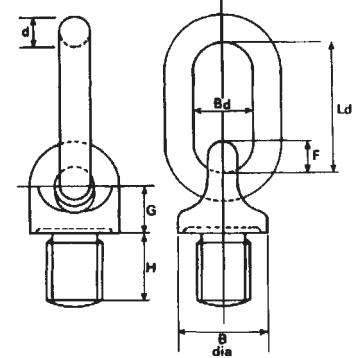


MATERIAL:
H.T. STEEL NORMALISED
S.W.L. SHOWN AT 0° (VERTICAL)
ANGLE OF LIFT
NOT TO BE USED FOR INCLINED
LIFT.

EYEBOLTS WITH LINK METRIC THREADS

Produced from BS 4278 Table 2 Forgings: 1984 c/w Link
HW 201 Coarse Thread

PART No.	SWL	Thread Size	B mm	F mm	G mm	H mm	LINK			Weight Each Kgs
							d	Bd	Ld	
HW201/0	100Kgs	M8	39	12	20	27	13	24	53	0.40
HW201A/0	150Kgs	M10	39	12	20	27	13	24	53	0.40
HW201B/1	200Kgs	M12	39	12	20	27	13	24	53	0.40
HW201G/3	300Kgs	M14	39	12	20	27	13	24	53	0.40
HW201C/2	400Kgs	M16	39	12	20	27	13	24	53	0.40
HW201E/4	700Kgs	M18	39	12	20	27	13	24	53	0.40
HW201F/5	1.3t	M22	47	14	23	32	15	29	63	0.80
HW201H/9	4.5t	M42	94	29	47	65	30	58	126	5.50
HW201D/7	5t	M45	94	29	47	65	30	58	126	5.50



**MATERIAL: AS SPECIFIED
BY BS 4278 HARDENED &
TEMPERED**

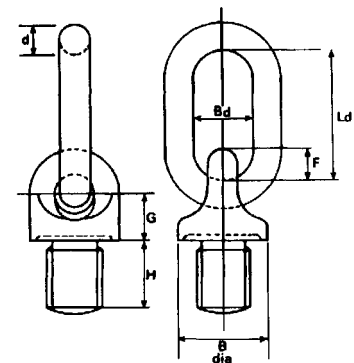
Other pitches available on request

**PLEASE NOTE:
THREADS UNDER 12mm ARE NOT RECOMMENDED FOR LIFTING.**

EYEBOLTS WITH LINK METRIC THREADS

BS 4278 Table 2 1984
HW 420 Coarse Thread

PART No.	SWL Tonnes	Thread Size	B mm	F mm	G mm	H mm	LINK			Weight Each Kgs
							d	Bd	Ld	
HW420/3	1.00	M20	39	12	20	27	13	24	53	0.50
HW420/4	1.60	M24	47	14	23	32	15	29	63	0.80
HW420/5	2.50	M30	60	18	30	41	19	37	80	1.50
HW420/6	4.00	M36	75	23	38	52	24	46	102	3.00
HW420/8	6.30	M48	94	29	47	65	30	58	126	5.50



**MATERIAL: AS SPECIFIED
BY BS 4278 HARDENED &
TEMPERED**

Other pitches available on request

FOR LOADING AT ANGLES AND TRUNNION LIFTING SEE PAGE 14

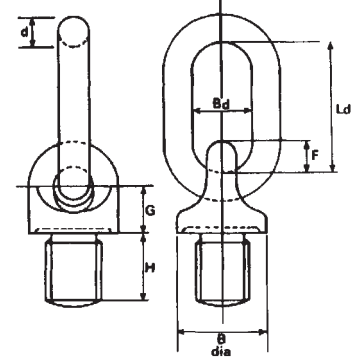
EYEBOLTS WITH LINK IMPERIAL THREADS

BS 4278 1984 APPENDIX 'A' TABLE 5

HW 450

PART No.	SWL Tonnes	Thread Size	B mm	F mm	G mm	H mm	LINK			Weight Each Kgs
							d	Bd	Ld	
HW450/1	0.25	1/2	39	12	20	27	13	24	53	0.40
HW450/2	0.50	5/8	39	12	20	27	13	24	53	0.40
HW450/3	1.00	3/4	39	12	20	27	13	24	53	0.40
HW450/4	1.60	1	47	14	23	32	15	29	63	0.80
HW450/5	2.50	1 1/4	60	18	30	41	19	37	80	1.50
HW450/6	4.00	1 1/2	75	23	38	52	24	46	102	3.00
HW450/8	6.30	1 3/4	94	29	47	65	30	58	126	5.50

Available in BSW and UNC Threads.
Other thread forms and diameters available on request.



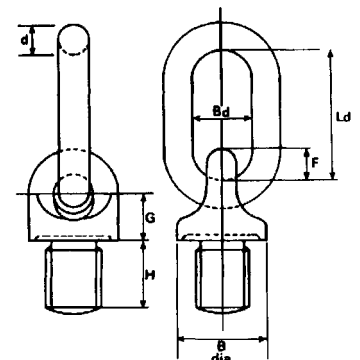
**MATERIAL: AS SPECIFIED
BY BS 4278 HARDENED &
TEMPERED**

EYEBOLTS WITH LINK METRIC THREADS

Based on BS 4278 TABLE 5 APPENDIX 'A': 1984

HW UN 8UN Thread

PART No.	SWL Tonnes	Thread Size	B mm	F mm	G mm	H mm	LINK			Weight Each Kgs
							d	Bd	Ld	
HWUN2A/5	2.50	1 1/4	60	18	30	41	19	37	80	1.50
HWUN2B/6	4.00	1 1/2	75	23	38	52	24	46	102	3.00
HWUN2C/7	6.30	1 3/4	94	29	47	65	30	58	126	5.50



**MATERIAL: AS SPECIFIED
BY BS 4278 HARDENED &
TEMPERED**

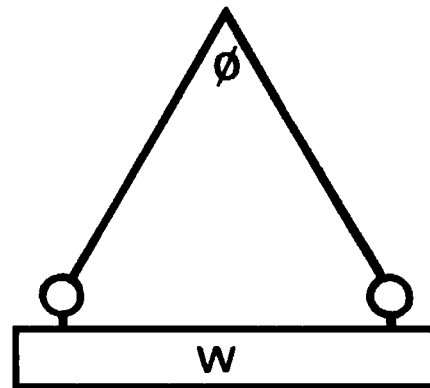
FOR LOADING AT ANGLES AND TRUNNION LIFTING SEE PAGE 14

HW 201, 420, 450, UN

MAXIMUM RECOMMENDED WORKING LOADS FOR BRITISH STANDARD COLLAR EYEBOLTS WITH LINKS WHEN USED IN PAIRS FOR INCLINED LOADING CONDITIONS

SAFE WORKING LOAD FOR A SINGLE EYEBOLT IN VERTICAL LIFT	MAXIMUM LOAD 'W' TO BE LIFTED BY A PAIR OF EYEBOLTS WHEN THE ANGLE Ø BETWEEN THE LEGS IS		
	0°<Ø>30°	30°<Ø>60°	60°<Ø>90°
TONNES	TONNES	TONNES	TONNES
1.00	2.0	1.6	1.25
1.25	2.5	2.0	1.6
1.60	3.2	2.5	2.0
2.00	4.0	3.2	2.5
2.50	5.0	4.0	3.2
3.20	6.3	5.0	4.0
4.00	8.0	6.3	5.0
5.00	10.0	8.0	6.3
6.30	12.6	10.0	8.0

NB. Dynamo Eyebolts are to be used for vertical lift only. If fitted in pairs or groups a spreader frame must always be used.



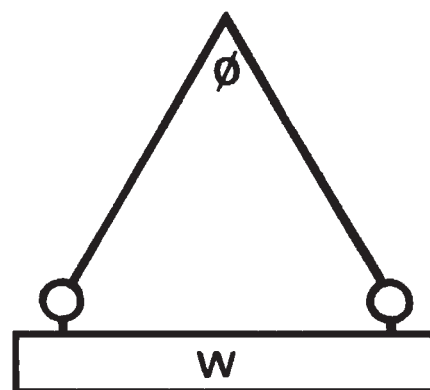
FOR TRUNNION LIFTING

The load taken by a single eyebolt should not exceed 63% of its marked SWL.

HW 418, 419

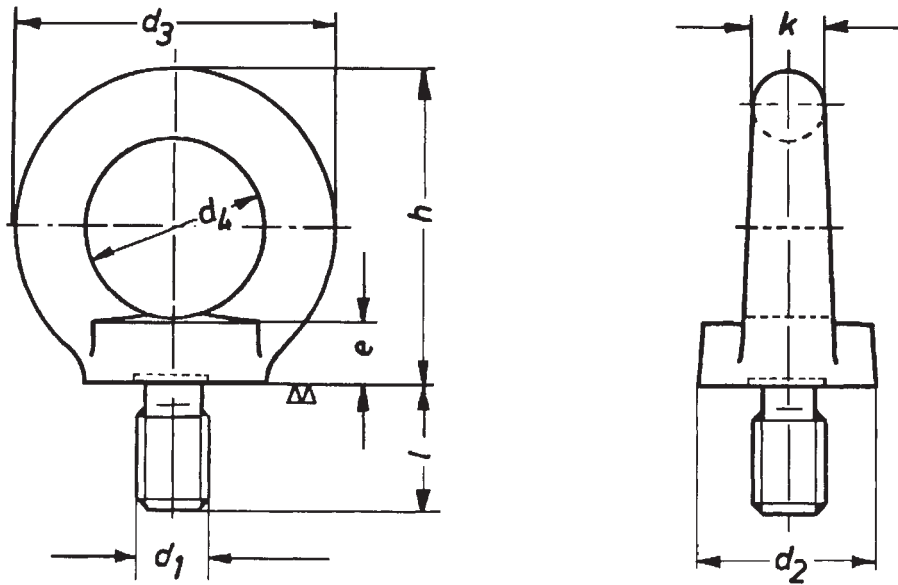
MAXIMUM RECOMMENDED WORKING LOADS FOR BRITISH STANDARD COLLAR EYEBOLTS WITH REEVABLE AND NON-REEVABLE EGG LINKS WHEN USED IN PAIRS FOR INCLINED LOADING CONDITIONS



SAFE WORKING LOAD FOR A SINGLE EYEBOLT IN VERTICAL LIFT	MAXIMUM LOAD 'W' TO BE LIFTED BY A PAIR OF EYEBOLTS WHEN THE ANGLE Ø BETWEEN THE LEGS IS		
	0°<Ø>30°	30°<Ø>60°	60°<Ø>90°
TONNES	TONNES	TONNES	TONNES
0.25	0.32	0.20	0.13
0.40	0.50	0.32	0.20
0.80	1.00	0.64	0.40
1.60	2.00	1.25	0.80
2.50	3.20	2.00	1.25
4.00	5.00	3.20	2.00
6.30	8.00	5.00	3.20



EYEBOLTS

DIN 580 Metric Coarse Thread



Measurements in mm								Weight per Kg 100off	Maximum Loads in Kg.		PART No.
d ₁	d ₂	d ₃	d ₄	e	h	k	l				
M8	20	36	20	6	36	8	13	6	140	95	580/0
M10	25	45	25	8	45	10	17	10	230	170	580/0A
M12	30	54	30	10	53	12	20,5	17,5	340	240	580/1
M16	35	63	35	12	62	14	27	28	700	500	580/2
M20	40	72	40	14	71	16	30	44	1200	830	580/3
M24	50	90	50	18	90	20	36	86	1800	1270	580/4
M30	65	108	60	22	109	24	45	160	3600	2600	580/5
M36	75	126	70	26	128	28	54	260	5100	3700	580/6
M42	85	144	80	30	147	32	63	400	7000	5000	580/7
M48	100	166	90	35	168	38	68	620	8600	6100	580/8
M56	110	184	100	38	187	42	78	880	11500	8300	580/9
M64	120	206	110	42	208	48	90	1240	16000	11000	580/10

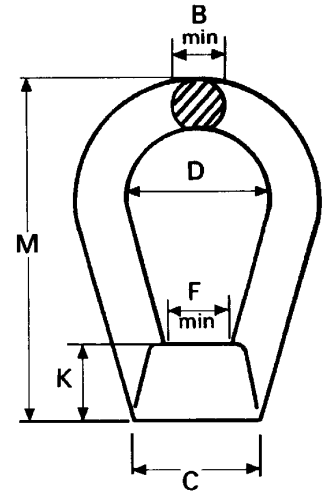
DROP FORGED WELDLESS EYENUTS (BOWNUTS)

BS 3974: PART 1 1974 (TESTED)

HW 96 / 97

PART No.	SWL Kgs	Thread Size	B min mm	C mm	F min mm	K mm	M mm	D mm	Weight Each Kgs
97MT/2	230	M8	6	32	12	16	64	25	0.2
97MT/3	360	M10	7	32	14	16	64	25	0.2
97MT/4	530	M12	9	38	16	18	73	30	0.3
97MT/5A*	600	M14	9	38	16	18	73	30	0.3
97MT/5	1010	M16	12	38	20	18	73	30	0.3
97MT/6A*	1000	M18	14	45	24	25	102	40	0.6
97MT/6	1580	M20	14	45	24	25	102	40	0.6
96MT/7*	1600	M22	14	45	24	25	102	40	0.6
97MT/8	2280	M24	17	50	28	28	124	50	0.9
97MT/9	3650	M30	21	70	34	38	146	75	2.4
97MT/10	5340	M36	26	70	40	38	146	75	2.4
97MT/11	7400	M42	30	80	46	45	180	100	4.0

Supplied with Metric Coarse threads, other pitches available on request.
Size marked * Outside BS.
For larger sizes we offer our Swivel Hook Bows.



**MATERIAL: AS SPECIFIED BY
BS 3974 NORMALISED.**

**NOT TO BE USED FOR
INCLINED LIFTING.**

STAINLESS STEEL GRADE 316 BOWNUTS

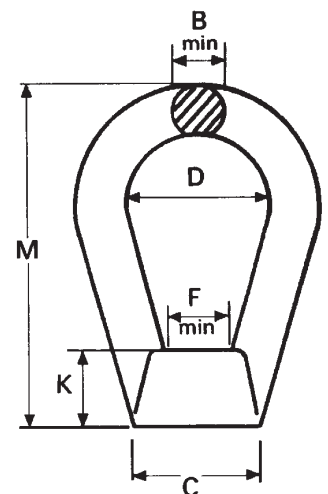
BASED ON BS 3974 PART 1: 1974

HW 97 Coarse Pitch

PART No.	SWL Kgs	Thread Size	B min mm	C mm	F min mm	K mm	M mm	D mm	Weight Each Kgs
HW97/3SS	360	M10	12	38	20	18	73	30	0.3
HW97A/4SS	530	M12	12	38	20	18	73	30	0.3
HW97B/5SS	1010	M16	12	38	20	18	73	30	0.3
HW97C/6SS	1580	M20	14	45	24	25	102	40	0.6
HW97D/7SS	2280	M24	17	50	28	28	124	50	0.9
HW97E/8SS	3650	M30	21	70	34	38	146	75	2.4
HW97F/9SS	5340	M36	26	70	40	38	146	75	2.4

Other diameters, thread forms and pitches available on application.

BOWNUTS ARE NOT TO BE USED FOR INCLINED LIFTING.



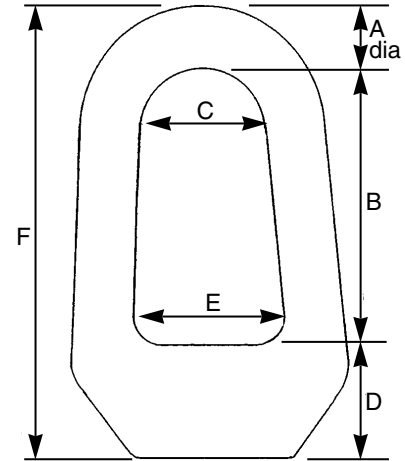
DROP FORGED BOWNUTS (TESTED)

PRODUCED FROM SWIVEL HOOK BOWS

Metric Coarse Thread

PART No.	SWL	Thread Size	A mm	B mm	C mm	D mm	E mm	F mm	Weight Each Kgs
HW96SB/12	10t	M48	33	152	67	52	94	237	6.5
HW96SB/13	16t	M56	38	160	82	70	95	268	10
HW96SB/14	20t	M64	48	205	98	82	122	335	19
HW96SB/15	25t	M72	48	205	98	82	122	335	19

Other pitches, diameters and thread forms available on application



**MATERIAL: H.T. STEEL
HARDENED & TEMPERED**

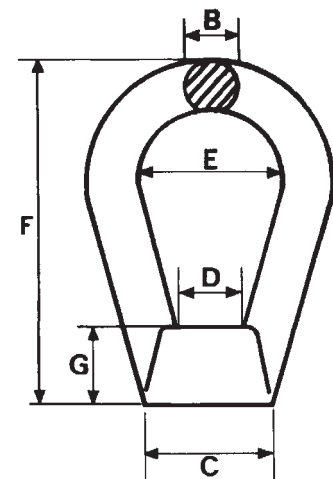
DROP FORGED STANDARD BOWNUTS (TESTED)

HW 96T Imperial Threads

PART No.	SWL	Thread Size	B ins	C ins	D ins	E ins	F ins	G ins	Weight Each Kgs
HW96T/3	250Kgs	3/8	3/8	1 1/4	9/16	1	2 1/2	5/8	0.2
HW96T/4	500Kgs	1/2	1/2	1 1/2	5/8	1 3/16	2 7/8	1 1/16	0.3
HW96T/5	800Kgs	5/8	1/2	1 1/2	5/8	1 3/16	2 7/8	1 1/16	0.3
HW96T/6	1.2t	3/4	5/8	1 3/4	1	1 5/8	4	1	0.6
HW96T/7	1.6t	7/8	5/8	1 3/4	1	1 5/8	4	1	0.6
HW96T/8	2.2t	1	3/4	2	1	2	4 7/8	1 1/8	0.9
HW96T/8A	2.2t	1 1/8	1 1/8	2 3/4	1 3/4	2 7/8	5 7/8	1 1/2	2.4
HW96T/9	3.5t	1 1/4	1 1/8	2 3/4	1 3/4	2 7/8	5 7/8	1 1/2	2.4
HW96T/10	4.75t	1 1/2	1 1/8	2 3/4	1 3/4	2 7/8	5 7/8	1 1/2	2.4

Supplied with Whitworth and UNC threads, other thread forms and diameters available on request.

For larger sizes we offer our Swivel Hook Bows (see above for dimensions)



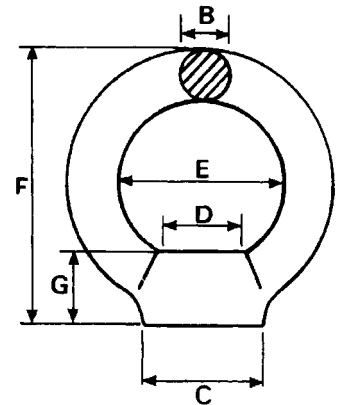
**MATERIAL:
H.T. STEEL NORMALISED.
NOT TO BE USED FOR
INCLINED LIFTING.**

DROP FORGED STANDARD EYENUTS (TESTED)

HW 95MT Metric Thread

PART No.	SWL		Thread Size	B mm	C mm	D mm	E mm	F mm	G mm	Weight Each Kgs
	Tonnes									
HW95MT/2	0.20		M8	13	29	19	44	78	22	0.1
HW95MT/3	0.30		M10	13	29	19	44	78	22	0.1
HW95MT/4	0.50		M12	13	29	19	44	78	22	0.1
HW95MT/4A	0.50		M14	13	29	19	44	78	22	0.3
HW95MT/5	0.80		M16	13	29	19	44	78	22	0.3
HW95MT/5A	1.00		M18	16	38	29	48	86	26	0.4
HW95MT/6	1.20		M20	16	38	29	48	86	26	0.4
HW95MT/7	1.60		M22	16	38	29	48	86	26	0.4
HW95MT/8	2.20		M24	19	44	35	54	105	38	0.8

For larger sizes we offer our Patt. HW 96/97 Bownuts and Swivel Hook Bows.



MATERIAL: BS970 H.T. STEEL NORMALISED.

NOT TO BE USED FOR INCLINED LIFTING.

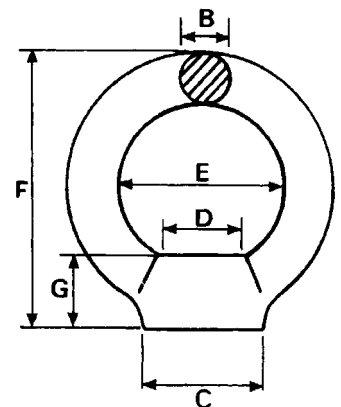
DROP FORGED STANDARD EYENUTS (TESTED)

HW 95T

PART No.	SWL		Thread Size	B ins	C ins	D ins	E ins	F ins	G ins	Weight Each Kgs
	Tons	Cwts								
HW95T/3	5		$\frac{3}{8}$	$\frac{1}{2}$	$1\frac{1}{8}$	$\frac{3}{4}$	$1\frac{3}{4}$	$3\frac{1}{16}$	$\frac{7}{8}$	0.3
HW95T/4	10		$\frac{1}{2}$	$\frac{1}{2}$	$1\frac{1}{8}$	$\frac{3}{4}$	$1\frac{3}{4}$	$3\frac{1}{16}$	$\frac{7}{8}$	0.3
HW95T/5	16		$\frac{5}{8}$	$\frac{1}{2}$	$1\frac{1}{8}$	$\frac{3}{4}$	$1\frac{3}{4}$	$3\frac{1}{16}$	$\frac{7}{8}$	0.3
HW95T/6	1	4	$\frac{3}{4}$	$\frac{5}{8}$	$1\frac{1}{2}$	$1\frac{1}{8}$	$1\frac{7}{8}$	$3\frac{3}{8}$	1	0.4
HW95T/7	1	12	$\frac{7}{8}$	$\frac{5}{8}$	$1\frac{1}{2}$	$1\frac{1}{8}$	$1\frac{7}{8}$	$3\frac{3}{8}$	1	0.4
HW95T/8	2	4	1	$\frac{3}{4}$	$1\frac{3}{4}$	$1\frac{3}{8}$	$2\frac{1}{8}$	$4\frac{1}{8}$	$1\frac{1}{2}$	0.8

BSW, UNC and other thread sizes and forms available on request.

For larger sizes we offer our Patt. HW 96 Bownuts and Swivel Hook Bows.

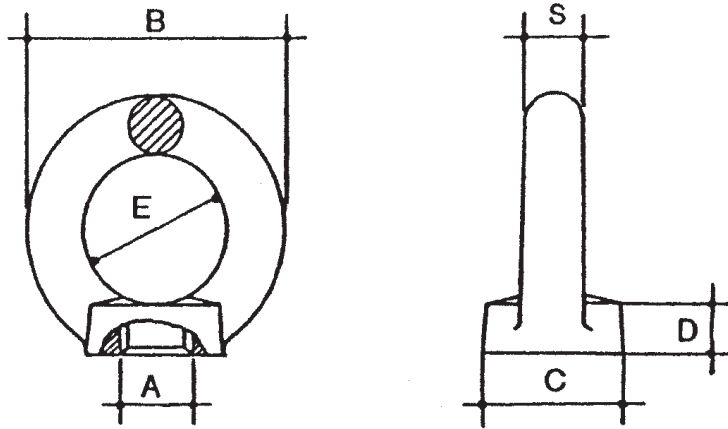




MATERIAL: BS970 H.T. STEEL NORMALISED.

NOT TO BE USED FOR INCLINED LIFTING.

EYENUTS TO DIN 582

HW 582 Metric Coarse Thread



Thread A	Measurements in mm					Weight per 100 off	Maximum Loads in Kg.		PART No.
	B	C	D	E	S				
M8	36	20	8.5	20	8	5Kg	140	95	HW582/0
M10	45	25	10	25	10	11Kg	230	170	HW582/0A
M12	54	30	11	30	12	16Kg	340	240	HW582/1
M16	63	35	13	35	14	25Kg	700	500	HW582/2
M20	72	40	16	40	16	34Kg	1200	830	HW582/3
M24	90	50	20	50	20	77Kg	1800	1270	HW582/4
M30	108	65	25	60	24	130Kg	3600	2600	HW582/5
M36	126	75	30	70	28	210Kg	5100	3700	HW582/6
M42	144	85	35	80	32	358Kg	7000	5000	HW582/7
M48	188	100	40	90	38	512Kg	8600	6100	HW582/8